

# **SAMPLE TEST PAPER FOR MASTERS PROGRAMS CANDIDATES**

**ENGLISH**

Complete the sentences by choosing the most appropriate option, from the given lettered choices (A to D) below each.

1. The Harvest Moon, the full moon nearest the autumnal equinox, \_\_\_\_\_ a period of several days when the moon rises soon after sunset.

- A. it brings
- B. bringing
- C. for bringing
- D. brings

Each question below consists of a related pair of words, followed by five lettered pairs of words. Select the lettered pair that best expresses a relationship similar to that expressed in the original pair.

2. DROWSE : SLEEP ::

- A. order : countermand
- B. look : peruse
- C. obstruct : proceed
- D. attenuate : extend
- E. practice : improve

Choose the lettered word or phrase that is most nearly opposite in meaning to the word in capital letters.

3. CONSOLIDATE

- A. disintegrate
- B. weaken
- C. disorganize
- D. erode

Choose the word most similar in meaning to the capitalized ones.

4. SOPORIFIC:

- A. memorial
- B. sleep producer
- C. awakening
- D. perspire

Read the passage to answer question 5-6

About 300 genera and 3,000 species of the Apiaceae family exist in the Northern Hemisphere. Nearly a quarter of these genera are native to the United States, with several large genera in the West.

Members of this family are usually aromatic herbs with hollow stems, fern-like leaves, and small flowers in umbels that are further grouped into a compound cluster. The family is important for such foods as carrots, parsnips, and celery and such spices and seasonings as coriander, caraway, anise, parsley, and dill. However, some species are very poisonous.

5. Approximately how many genera of the Apiaceae family are native to the United States?
- A. 25
  - B. 75
  - C. 300
  - D. 3,000
6. Which of the following is NOT mentioned as a member of the Apiaceae family?
- A. Parsnips
  - B. Potatoes
  - C. Carrots
  - D. Parsley

**IQ / GK**

7. Arrange the following in "natural-order".  
"THINK", "SPEAK", "LISTEN"

- A. THINK, SPEAK, LISTEN
- B. LISTEN, THINK, SPEAK
- C. SPEAK, LISTEN, THINK
- D. THINK, LISTEN, SPEAK

8. The capital of China is:

- A. Shangai
- B. Beijing
- C. Xian
- D. Tokyo
- E. Yen Kong

**CHEMISTRY**

9. Acetone is Latin word for \_\_\_\_\_.

- A. Vinegar
- B. Prion
- C. Butyrum
- D. Caper

10. Which of the following is the best reducing agent in water?

- A. Na
- B. Rb
- C. Li
- D. Cs

## ECONOMICS

11. The goods, the benefits of which are available in a non-rival fashion are termed as:

- A. Private goods
- B. Public goods
- C. Commercial goods
- D. Usual goods
- E. Government goods

12. The long run consumption is also known as:

- A. Secular consumption function
- B. Cyclical consumption
- C. Spectral consumption
- D. Complete function
- E. None of the above

## PHYSICS

13. The tail end of vector represented graphically is considered as:

- A. Closing point
- B. End point
- C. Initial point
- D. Zero point

14. Torsion couple in the galvanometer:

- A. Restores the coil to original position
- B. Is proportional to angle of deflection
- C. Is calculated by  $c\theta$
- D. Is called restoring couple
- E. All of the above

## ZOOLOGY

15. Development in a fertilized egg starts from:

- A. fragmentation
- B. regeneration
- C. cleavage
- D. invagination

16. Blood of annelids has:

- A. no corpuscles
- B. non nucleated corpuscles
- C. nucleated corpuscles with pigment
- D. colorless nucleated corpuscles



**BOTANY**

17. In fungi, the "Damping off" is caused by \_\_\_\_\_.

- A. Albugo
- B. Pythium
- C. Penicillium
- D. Plasmodiophore

18. Primary productivity of vegetation is directly related with rate of \_\_\_\_\_.

- A. Growth of producers
- B. Photosynthesis
- C. Death of producers
- D. Energy consumed

## GEOGRAPHY

19. One of the chief products of vulcanian and pelean type of eruption is volcanic:

- A. ash
- B. lahar
- C. plug dome
- D. activity

20. The Thal Desert lies in a fertile patch of \_\_\_\_\_ Doab.

- A. Sandal
- B. Rechna
- C. Jech
- D. Sindh

## MICROBIOLOGY

21. Organisms that can live in harsh conditions are called:

- A. Microbes
- B. Harshphiles
- C. Quantmphilis
- D. Extremophiles
- E. None of the above

22. The science of fermentation is known as \_\_\_\_\_ that converts sugars into alcohols.

- A. biotechnology
- B. nano technology
- C. zymurgy
- D. biochemistry

**BIO STATISTICS**

23. Zahid received the following scores on his math tests during the last semester: 82, 83, 78, 90, 94, 91, 91, 89, 82. What was his median score?

- A. 83.5
- B. 86
- C. 86.6
- D. 89

24. The probability of 'happening' or 'not happening' of an event is:

- A. 1
- B. 2
- C.  $1/3$
- D. 5
- E. 8

## GEOLOGY

25. Naturally occurring, crystalline, inorganic substances with a definite small range in chemical and physical properties are called:

- A. Crystal
- B. Rocks
- C. Minerals
- D. None of the above

26. \_\_\_\_\_ is a natural aggregate of one or more minerals.

- A. crust
- B. salt
- C. rock
- D. None of the above

**BIO CHEMISTRY**

27. Proteins called enzymes type of macromolecule carry out \_\_\_\_\_ in biological systems.

- A. catalysis
- B. metabolize
- C. anabolize
- D. lipid

28. Uric acid is the \_\_\_\_\_ end product of purines.

- A. catabolic
- B. anabolic
- C. metabolic
- D. porphyrine

**ADVANCE MATH**

29. Every discrete topological space is:

- A. Metric
- B. Co finite
- C. Indiscrete
- D. Metrizable
- E. None of the above

30. Every abelian group is also known as:

- A. Semi Group
- B. Moniod
- C. Commutative Group
- D. Group
- E. Abelian Group

## STATISTICS

31. \_\_\_\_\_ is used to order data elements according to their relative size or quality.
- A. Nominal scale
  - B. Ordinal scale
  - C. Ascending order
  - D. Descending order
32. \_\_\_\_\_ probability distribution has two positive shape parameters.
- A. Gamma
  - B. Second kind Beta
  - C. First kind Beta
  - D. Beta



## INTRODUCTION TO COMPUTERS

33. Print preview command is useful to have a look at the document before it goes to \_\_\_\_\_.

- A. monitor
- B. printer
- C. scanner
- D. web cam

34. MS Excel files contain \_\_\_\_\_.

- A. sheets
- B. pages
- C. wallpapers
- D. slides

## PSYCHOLOGY

35. The humanistic approach to psychology is focused on:

- A. Behaviour
- B. The experience of early childhood
- C. Genetic influences on personality
- D. Descriptions of experience
- E. Conditioning

36. The suggested cause of abnormal behavior, from the cognitive is:

- A. Early childhood experiences
- B. Faulty thinking
- C. Faulty learning
- D. Unconscious, unresolved conflicts

## PHYSIOLOGY

37. A nerve cell that receives stimuli from the outside is known as a(n):

- A. Motor neuron
- B. Sensory neuron
- C. Efferent neuron
- D. Interneuron
- E. Ganglion

38. Sympathetic drive to the heart is increased:

- A. In exercise
- B. In excitement
- C. In hypotension
- D. All of the above

## POLITICAL SCIENCE

39. In 1960, \_\_\_\_\_ was established.

- A. OPEC
- B. NATO
- C. SEATO
- D. ASEAN
- E. NAM

40. Lord Minto introduced the \_\_\_\_\_ system in subcontinent.

- A. Provincial Govt
- B. National Govt
- C. Federal Govt
- D. Local Govt

**ADVANCE ENGLISH**

In the following passage, some of the words have been left out. Read the passage and fill in the blanks from the choices given below: (11-12)

Pakistan keeps on 11 that Kashmir is the core issue 12 to adversarial relations. To India too Kashmir is the core issue affecting not only its security and stability but also geo-political equations between all countries within South Asia's land mass.

41.

- A. saying
- B. harping
- C. arguing
- D. justifying

42.

- A. making
- B. bringing
- C. leading
- D. tending

In each of the following questions, a phrase or idiom is given followed by four alternatives. Select from the alternatives the meaning of the phrase/idiom.

43. By hook or by crook

- A. by one way or the other
- B. make a false claim
- C. leave unfinished
- D. catch the fish

Identify the word or phrase that needs to be changed for the sentence to be correct:

44. Yesterday one of the teacher was called by the principal. No error.

A

B

C

D

E

Each of the following questions consists of a sentence with all or part of the sentence underlined. Following the requirements of standard written English, select (A) if the original is best; otherwise choose the best phrase from the options

45. When automatic teller machines were first installed in the 1980s, bank officials promised they would be faster, more reliable, and less prone to make errors than their human counterparts.

- A. they would be faster, more reliable, and less prone to make errors
- B. they would be faster, more reliable, and that they would be less prone for making errors
- C. the machines would be faster, more reliable, and less prone to make errors
- D. the machines were faster, more reliable, and errors would occur much less
- E. faster, more reliable machines, and that errors would be less prone

## EDUCATION

46. According to Ibn-e-Khaldun, there are \_\_\_\_\_ main streams of knowledge.

- A. two
- B. three
- C. four
- D. five

47. Schools, both public and private, are established as definite \_\_\_\_\_ agencies to meet the educational needs of all age groups.

- A. desired
- B. federal
- C. informal
- D. formal

## SOCIOLOGY

48. What are cultural universals?

- A. Special order of society
- B. General analysis of a society
- C. General behaviour of a society
- D. General social practices found in every society
- E. All of the above

49. Social satisfaction is guided by:

- A. religious feelings
- B. extent of socialization
- C. economic consideration
- D. extent of contacts



## GENERAL HISTROY

50. About 10 Million Europeans were killed during:

- A. Tsunami
- B. World war 1
- C. Earthquake 1772
- D. World war II

51. \_\_\_\_\_ was conquered by Tariq Bin Ziad.

- A. Syria
- B. Spain
- C. Egypt
- D. Iraq
- E. Iran

## ISLAMIC HISTROY

52. In fourth century, there was a great deal of torture against the Christians in \_\_\_\_\_ but it became the centre of Christianity.

- A. Italy
- B. Rome
- C. Arabia
- D. Israel

53. Hazrat Abu Bakr (RA) migrated to Madina in:

- A. 620 AD
- B. 622 AD
- C. 624 AD
- D. 626 AD
- E. 571 AD

## PHILOSOPHY

54. Philosophy comes from the Greek words \_\_\_\_\_ meaning "to love" and \_\_\_\_\_, meaning "wisdom".

- A. Philo... Sophia
- B. Philein ... Sophia
- C. Psylo ... Sophia
- D. Pylo ... Sophia

55. Substance is something which subsist by:

- A. Man
- B. Spirit
- C. Itself
- D. Other than itself

**MATH**

56.  $\left(\frac{?}{18}\right) \times \left(\frac{?}{162}\right) = 1$

- A. 64
- B. 34
- C. 54
- D. 94

57. The sum of two numbers is 40 and their difference is 4. The smaller of the numbers is

- A. 21
- B. 19
- C. 22
- D. 9
- E. 18

**ISLAMIC CULTURE / LEARNING**

58. The sayings of the Holy Quran are called by the name of:

- A. Sunat-e-Qauli
- B. Sunat-e- faeli
- C. Sunat-e-taqriri
- D. None of the above

59. What is the rate of Ushr payable from a canal irrigated land?

- A. Fifth
- B. Tenth
- C. Twenty fifth
- D. Twentieth

## INTERNATIONAL RELATIONS

60. The peaceful settlements of international disputes were highlighted in:

- A. Paris Declaration
- B. Washington Declaration
- C. Manila Declaration
- D. Tokyo Declaration
- E. Shanghai Declaration

61. Central Asia is rich in:

- A. Gold
- B. Iron ore
- C. Hydrocarbon
- D. Tin
- E. Copper

**LIBRARY AND INFORMATION SCIENCES**

62. Casual relationship between variables is identified in which type of research?

- A. History
- B. Experimental
- C. Case study
- D. Survey

63. In author catalogue, books are entered under:

- A. Corporate names
- B. Personal names
- C. Surnames
- D. None of the above

## MASS COMMUNICATION

64. What was the name of first Urdu newspaper in India?

- A. Jam-e-Jehan Numa
- B. Hicky Gazette
- C. Hamdard
- D. Comrade
- E. None of the above

65. Freshness of an event is:

- A. News value
- B. News element
- C. News policy
- D. News frame



## STATISTICS

66. In regression analysis, Dummy variable may assume only the value

\_\_\_\_\_.

- A. 0 or 1
- B. 0 and 1
- C. 1 or -1
- D. -1

67. \_\_\_\_\_ probability distribution has two positive shape parameters.

- E. Gamma
- F. Second kind Beta
- G. First kind Beta
- H. Beta

## ECONOMICS

68. When the rate of tax increases as the tax base increases it is called:

- A. Proportional tax
- B. Progressive tax
- C. Regressive tax
- D. Diversity of tax

69. The goods, the benefits of which are available in a non-rival fashion are termed as:

- F. Private goods
- G. Public goods
- H. Commercial goods
- I. Usual goods
- J. Government goods

## GEOGRAPHY

70. One of the chief products of vulcanian and pelean type of eruption is volcanic:

- E. ash
- F. lahar
- G. plug dome
- H. activity

71. The Thal Desert lies in a fertile patch of \_\_\_\_\_ Doab.

- E. Sandal
- F. Recna
- G. Jech
- H. Sindsagar

## PSHCHOLOGY

72.The humanistic approach to psychology is focused on:

- F. Behaviour
- G. The experience of early childhood
- H. Genetic influences on personality
- I. Descriptions of experience
- J. Conditioning

73.The suggested cause of abnormal behavior, from the cognitive is:

- E. Early childhood experiences
- F. Faulty thinking
- G. Faulty learning
- H. Unconscious, unresolved conflicts

## HOW TO FILL THE ANSWER SHEET?

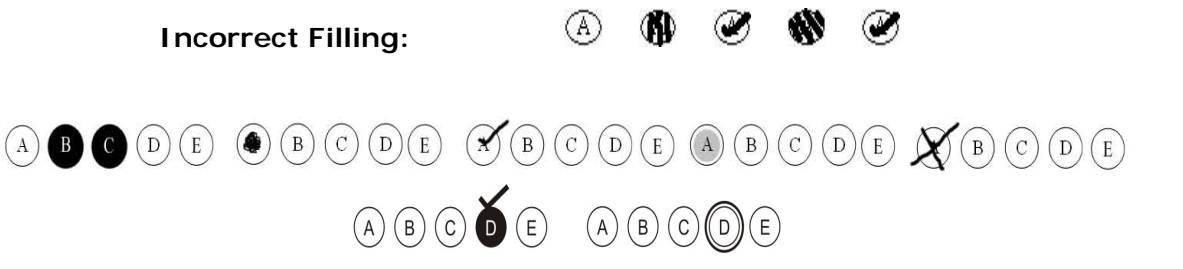
One page printed Answer Sheet is provided to answer the questions. USE ONLY BALL PEN (BLACK/ BLUE) TO SHADE/FILL THE CIRCLES.

How to fill an Answer: Answer sheet contains five circles containing five options of answer for one questions, containing alphabets from A to E inside, against each question number. The candidate has to completely shade/fill one circle that s/he thinks is correct. For example the candidate feels that the correct answer of the given question is 'A', then s/he may shade/fill the circle containing alphabet 'A' with ball pen like this:

"A" Filled



Incorrect Filling:



### Personal Data on Answer Sheet

The Answer Sheet contains personal data of candidate on the top of the sheet. It has candidates' NAME, FATHER NAME and ROLL NO. The candidate is required to critically check these fields and sign in the required space. If any field of personal information is found in-correct the candidate MUST inform the invigilator present around.

Write down your Question booklet No. given on the right top corner of the Question booklet in the column of "Question book No".

Fill the circle "color of your question book". Fill the right circle otherwise you will confuse the marking process which can have negative effects.

**ANSWER KEYS**

Q #.	Right Choice
1	D
2	B
3	B
4	B
5	B
6	B
7	B
8	B
9	A
10	C
11	B
12	A
13	C
14	E
15	C
16	D
17	B
18	B
19	A
20	D
21	D
22	C
23	D
24	A
25	C
26	C
27	A
28	A
29	D
30	C
31	B
32	B
33	B
34	A
35	D
36	C
37	B
38	D

Q #.	Right Choice
39	A
40	D
41	B
42	C
43	A
44	B
45	C
46	A
47	D
48	D
49	C
50	B
51	B
52	B
53	B
54	B
55	C
56	C
57	E
58	A
59	D
60	C
61	C
62	B
63	B
64	A
65	A
66	A
67	B
68	B
69	B
70	A
71	D
72	D
73	C