

SAMPLE TEST PAPER FOR BACHELORS PROGRAMS CANDIDATES

ENGLISH

Complete the sentences by choosing the most appropriate word, from the given lettered choices (A to D) below each.

1. Ahmad always seeks _____ wealth.

- A. from
- B. with
- C. to
- D. for

Each question below consists of a related pair of words, followed by five lettered pairs of words. Select the lettered pair that best expresses a relationship similar to that expressed in the original pair.

2. PAGE: BOOK::

- A. sailors: crew
- B. petal: flower
- C. leaf: stalk
- D. singers: chorus

Choose the lettered word or phrase that is most nearly opposite in meaning to the word in capital letters.

3. PARTICULAR:

- A. general
- B. widespread
- C. diffused
- D. common

Choose the word most similar in meaning to the capitalized ones.

4. CHANGE:

- A. alter
- B. church
- C. complete
- D. decide
- E. agree

Read the passage to answer questions 5-6

The vast multitude of stars are wandering about in space. A few form groups which journey in company, but the majority are solitary travelers. And they travel through a universe so spacious that it is an event of almost unimaginable rarity for a star to come anywhere near to another star. For the most part each voyages in splendid isolation, like a ship on an empty ocean. In a scale model in which the stars are ships, the average ship will be well over a million miles from its nearest neighbor, whence it is easy to understand why a ship seldom finds another within hailing distance.

5. Which of the following is incorrect according to the passage?

- A. Most of the stars travel in isolation
- B. The universe is very large
- C. A star very frequently comes near to another one
- D. A star very rarely comes near to another one
- E. Some stars travel in groups

6. In the passage the "ship" symbolizes:

- A. space
- B. traveler
- C. universe
- D. ocean
- E. star

IQ / GK

7. If $4 \times 5 = 1620$, $3 \times 8 = 924$ then $7 \times 6 = ?$
- A. 1740
 - B. 1880
 - C. 4949
 - D. 4942
8. A father is 5 times as old as his son. In 18 years, the father will be twice as old as his son. How old is the father at present?
- A. 20 years
 - B. 30 years
 - C. 50 years
 - D. 40 years
9. When was Sui Gas first discovered in Pakistan?
- A. 1959
 - B. 1952
 - C. 1981
 - D. 1989
10. Sun is a(n):
- A. star
 - B. asteroid
 - C. planet
 - D. satellite

PHYSICS

11. Which of the following quantities is a scalar?

- A. magnetic moment
- B. acceleration due to gravity
- C. electric field
- D. electrostatic potential

12. A particle is projected at angle of 45° with a velocity of 9.8ms^{-1} .
The horizontal range will be:

- A. $9.8/\sqrt{2}\text{m}$
- B. $9.8\sqrt{2}\text{m}$
- C. 9.8m
- D. 4.9m

MATHS

13. If $\cos \theta + \sin \theta = \sqrt{2} \cos \theta$, then $\cos \theta - \sin \theta = ?$

- A. $\sqrt{2} \sin \theta$
- B. $\frac{1}{\sqrt{2}} \cos \theta$
- C. $\frac{1}{\sqrt{2}} \sin \theta$
- D. None of the above

14. The probability of getting the product a perfect square (square of a natural number), when two dice are thrown together, is:

- A. $\frac{2}{9}$
- B. $\frac{4}{9}$
- C. $\frac{1}{3}$
- D. 5

COMPUTER

15. Relational database is previewed by user as:

- A. a collection of tables
- B. a collection of attributes
- C. a collection of rows and columns
- D. a collection of rows only

16. Pointer variables are used for storing:

- A. Data values
- B. Address of another variable
- C. Both data values and address
- D. None of the above

CHEMISTRY

17. Viscosity of liquids depends upon:

- A. Temperature
- B. Size of molecule
- C. Shape of molecule
- D. Inter-molecular forces
- E. All of the above

18. Which pair of gases have same rate of diffusion at STP?

- A. H_2 and Ne
- B. O_2 and CO
- C. CO_2 and C_3H_8
- D. CO_2 and SO_2

BIOLOGY

19. Molds and yeast are classified as:

- A. Rhodophytes
- B. Bryophytes
- C. Fungi
- D. Ciliates
- E. Flagellates

20. Which compound captures light energy in plants?

- A. O_2
- B. CO_2
- C. H_2O
- D. Chlorophyll
- E. None of the above

STATISTICS

21. Zahid received the following scores on his math tests during the last semester: 82, 83, 78, 90, 94, 91, 91, 89, 82. What was his median score?

- A. 83.5
- B. 86
- C. 86.6
- D. 89

22. The probability of 'happening' or 'not happening' of an event is:

- A. 1
- B. 2
- C. $1/3$
- D. 5
- E. 8

GEOGRAPHY

23. The latitude of a place is measured as a distance from the:

- A. equator in kilometers
- B. equator as an angle
- C. poles as an angle
- D. prime meridian as an angle

24. _____ is a process of leaving one country to take permanent residence in another country.

- A. Immigration
- B. Emigration
- C. Illegal Alien
- D. Asylum

PRINCIPLE OF ACCOUNTING

25. A receipt and payments account is one:

- A. Which is accompanied by a balance sheet
- B. In which the profit is calculated
- C. In which the opening and closing cash balances are shown
- D. In which the surplus of income over expenditure is calculated

26. Which of the following is correct?

- A. Profit does not alter Capital
- B. Profit reduces capital
- C. Capital can only come from Profit
- D. Profit increases capital

PRINCIPLE OF COMMERCE

27. The wholesaler has which of the following characteristics?

- A. He sells goods to retailers.
- B. He sells goods to consumer.
- C. He sells goods to Manufacturer.
- D. None of the above.

28. The winding up of sole trader ship:

- A. Require legal formality
- B. Does not require legal formality or restriction
- C. According to Situation
- D. None of the above

PRINCIPLE OF ECONOMICS

29. In his General Theory of Employment, Keynes pointed out that:

- A. the economy automatically tends toward full employment equilibrium
- B. if there is unemployment, there is also likely to be inflation
- C. the economy may be in equilibrium at less than full employment
- D. the interest rate is insignificant
- E. with flexible wages and prices, fluctuations in unemployment would disappear

30. The average tax rate is equal to the:

- A. Total tax liability divided by taxable income
- B. Rate that will be paid on the next dollar of taxable income
- C. Median marginal tax rate
- D. Percentage increase in taxable income from the previous period

GENERAL MATH

31. The circumference of a circle whose diameter is 7 inches is approximately:

- A. 22 inches
- B. 28 inches
- C. 38 inches
- D. 154 inches
- E. 14 inches

32. What is 15% of 32?

- A. 4
- B. 3.50
- C. 4.80
- D. 3.80

33. Solve the following equation for x:

$$3x - 5 = 3 + 2x$$

- A. 8
- B. 10
- C. 6
- D. 14

CIVICS

34. The difference between parliamentary and presidential democracy is of:

- A. Election of the executive branch
- B. Election of the legislature
- C. The court system
- D. Government power

35. The two main objectives of law should be:

- A. freedom and equality
- B. freedom and happiness
- C. property and protection
- D. equality and suffrage

ISLAMIC HISTORY

36. Event of Miraj took place on:

- A. 27th Ramzan
- B. 12 Rabial Awal
- C. 27th Rajab
- D. 10 Shawal

37. Najashi was King of:

- A. Egypt
- B. Ethopia
- C. Sudan
- D. Jordan

EDUCATION

38. Feasibility study is also known as:

- A. Correlational Research
- B. Explanatory Research
- C. Descriptive Research
- D. Expletory Research

39. A good curriculum is always _____.

- A. Static
- B. Research based
- C. Rigid
- D. Teacher centered

SOCIOLOGY

40. What term is used to refer to 'attempts by society to regulate people's thought and behavior?'

- A. Social control
- B. Social norms
- C. Social pressure
- D. Social order

41. Lower-prestige work that involves mostly manual labour is called:

- A. White-collar job
- B. Blue-collar job
- C. Grey-collar job
- D. Black-collar job

PSYCHOLOGY

42. Friendship groups begin to develop during which of the stages of cognitive development?

- A. Pre operational stage
- B. Concrete operational stage
- C. Sensorimotor stage
- D. Formal operational stage

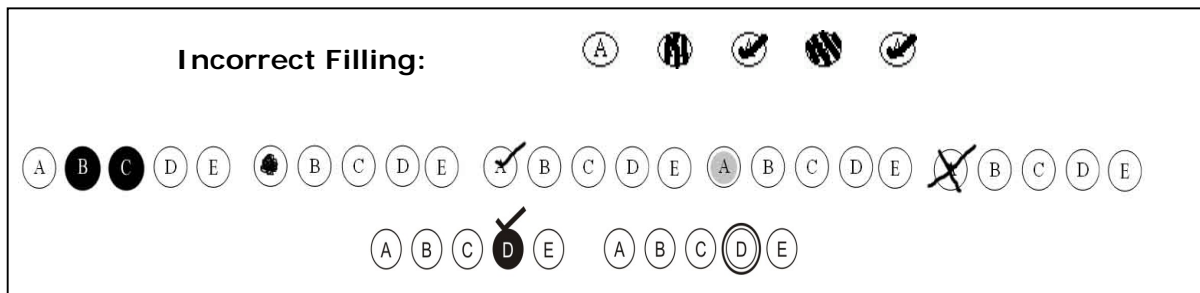
43. Which correlation is the strongest?

- A. $+ .10$
- B. $- .95$
- C. $+ .90$
- D. -1.00

HOW TO FILL THE ANSWER SHEET?

One page printed Answer Sheet is provided to answer the questions. **USE ONLY BALL PEN (BLACK/ BLUE) TO SHADE/FILL THE CIRCLES.**

How to fill an Answer: Answer sheet contains five circles containing five options of answer for one questions, containing alphabets from A to E inside, against each question number. The candidate has to completely shade/fill one circle that s/he thinks is correct. For example the candidate feels that the correct answer of the given question is 'A', then s/he may shade/fill the circle containing alphabet 'A' with ball pen like this:



Personal Data on Answer Sheet

The Answer Sheet contains personal data of candidate on the top of the sheet. It has candidates' NAME, FATHER NAME and ROLL NO. The candidate is required to critically check these fields and sign in the required space. If any field of personal information is found in-correct the candidate **MUST** inform the invigilator present around.

Write down your Question booklet No. given on the right top corner of the Question booklet in the column of "Question book No".

Fill the circle "color of your question book". Fill the right circle otherwise you will confuse the marking process which can have negative effects.

ANSWER KEYS

Q #.	Right Choice
1	D
2	B
3	C
4	A
5	C
6	E
7	D
8	B
9	B
10	A
11	D
12	C
13	A
14	A
15	A
16	B
17	E
18	C
19	C
20	D
21	D
22	A
23	B
24	B
25	C
26	D
27	A
28	B
29	C
30	A
31	A
32	C
33	A
34	B
35	A
36	C
37	B
38	D
39	B
40	A
41	B
42	B
43	A